



R I C H A R D S   &   S T E R L I N G

# REMEMBER -

STONE must be sealed and maintained  
STONE should be sealed PRIOR to grouting  
STONE cannot be sorted or returned partially  
STONE has a natural variation that is beautiful  
STONE is not always consistently available

all STONE is UNFILLED, unless otherwise noted (+)

## USE CODES

durability ① Residential  
② Residential/Light Commercial  
③ Commercial

variation ● Minimal Shade/Color Variation  
■ Moderate Shade/Color Variation  
▲ Considerable Shade/Color Variation  
▣ Aged, Tumbled, Rustic or Distressed tiles  
may have irregular edges and/or corners

+ Filled (typically TRAVERTINE)

we recommend to ALWAYS set from multiple (4-5)  
cartons to adequately blend the installation

Sealing is an important step in the installation and maintenance of any NATURAL STONE!

We recommend the use of a premium quality PENETRATING SEALER.

We also recommend sealing the NATURAL STONE **PRIOR** to grouting to prevent staining and maintain color consistency of the NATURAL STONE.

*Packing information is intended to be accurate and helpful, but factories occasionally change packing without notice. All information contained is believed to be reliable, but not to be taken as promise or assurance. All reports of inaccuracies, errors or misprints are appreciated.*

:

# + T A K L A +

**2 x 2 (mounted)**



▶ 117/8" x 117/8" ◀

finish **TUMBLLED**  
 thickness 3/8  
 unit Sheet  
 unit size .98 sf sheet  
 unit/sf 1.02

prod no.  
 XTK 102M  
 XTK 302M

prod name  
 Takla Keko ■ ■  
 Takla Nysa ▲ ■

lbs/unit (sheets) sheet/packing  
 5.0 10 10/carton

**STYK (mounted)**



▶ 115/8" x 113/4" ◀

finish **TUMBLLED**  
 thickness 3/8  
 unit Sheet  
 unit size .95 sf sheet  
 unit/sf 1.05

prod no.  
 XTK 104ST  
 XTK 304ST

prod name  
 Takla Keko ■ ■  
 Takla Nysa ▲ ■

lbs/unit (sheets) sheet/packing  
 5.0 10 10/carton



Takla Keko



Takla Nysa



Takla Keko



Takla Nysa

Tumbled Travertine

② LIGHT COMMERCIAL

- Aged, Tumbled, Rustic or Distressed tiles may have irregular edges and/or corners

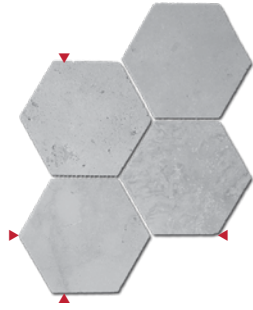
Keko	Nysa
V3 Moderate	V4 Substantial

Thickness  
 3/8 "  
 1/2 "  
 (12 x 24)



# + T A K L A +

## HECKS 5" (mounted)



▶ 10 1/8" x 9" ◀

finish **TUMBLLED**  
 thickness 3/8  
 unit Sheet  
 unit size .65 sf sheet  
 unit/sf 1.55  
 lbs/unit (sheets) sheet/packing  
 3.60 10 10/carton

prod no. XTK 106HK  
 XTK 306HK  
 prod name Takla Keko ■ ▣  
 Takla Nysa ▲ ▣



Keko Hecks



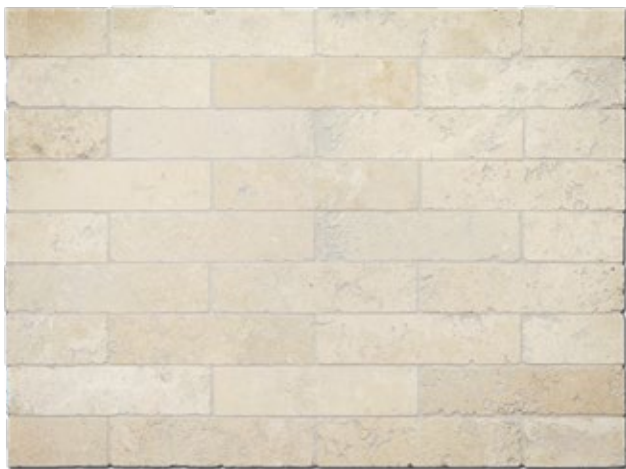
Nysa Hecks

## 2 x 8



finish **TUMBLLED**  
 thickness 3/8  
 unit Sf  
 pc size 2 x 8  
 pc/sf 7.2  
 lbs/sf (pcs) sf/packing  
 5.40 52 5.38/carton

prod no. XTK 108  
 XTK 308  
 prod name Takla Keko ■ ▣  
 Takla Nysa ▲ ▣



Keko 2 x 8



Nysa 2 x 8

# + T A K L A +

**6 x 16**



finish **TUMBLED**

thickness 3/8

unit Sf

pc size 6 x 16

pc/sf 1.5



prod no.

XTK 116

XTK 316

prod name

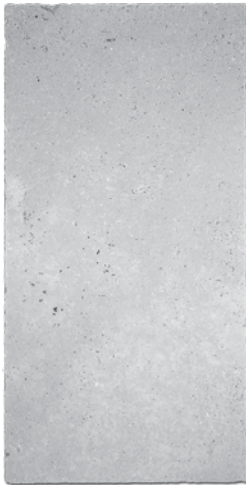
Takla Keko  

Takla Nysa  

lbs/sf (pcs) sf/packing

5.70 18 13.13/carton

**12 x 24**



finish **TUMBLED**

thickness 1/2

unit Sf

pc size 12 x 24

pc/sf .50

prod no.

XTK 124

XTK 324

prod name

Takla Keko  

Takla Nysa  

lbs/sf (pcs) sf/packing

5.70 5 10/carton